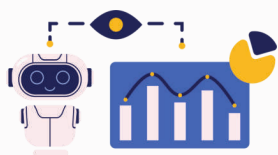


# AI INNOVATION IN THIS BOOK

WHAT'S NEW?

The iEdubull Textbook leverages AI to elevate learning and teaching in a meaningful way. EeeBee AI Buddy empowers students to independently explore and find answers, helping them truly understand questions and concepts, while supporting teachers with tailored lesson plans and activities. The Gap Analyzer™ identifies learning gaps and offers actionable insights, ensuring students are equipped for an AI-driven future - **where AI is not just a buzzword, but a practical tool for real educational progress.**

## bACEline Tests



**What It Is:** bACEline Tests identify learning loss over the years and uncover insights into how students learn and retain information.

**What AI Does:** AI analyzes test results to highlight previous class and skill gaps, learning loss and patterns, as well as areas needing attention, guiding personalized learning.

**Uniqueness/Innovation:** It goes beyond traditional assessments by tracking long-term learning progress, offering a clear picture of each student's journey, and helping teachers tailor interventions effectively.

**Where to find it:**  
It is Chapter 0, recommended to be taken at the start of the school year

## Gap Analyzer™



**What It Is:** The Gap Analyzer™ is a diagnostic assessment. It continuously monitors student engagement and performance with the resources in the iEdubull textbook. Included in the book as a concept task and topic task.

**What AI Does:** AI identifies conceptual learning gaps in understanding and tracks progress, providing teachers with real-time insights and actionable data on student performance. It helps teachers plan lessons, grade lessons, and even monitor progress.

**Uniqueness/Innovation:** It helps students overcome skill, current, and previous class learning gaps. It offers continuous, data-driven monitoring, allowing teachers to track student progress and adjust lessons dynamically, ensuring targeted learning support.

**Where to find it:**  
After every concept and chapter.

## EeeBee AI Buddy



**What It Is:** EeeBee AI Buddy is an interactive assistant for teachers and a buddy for students that encourages students to think deeply, explore concepts, and learn independently.

**What AI Does:** AI encourages critical thinking by guiding students to explore answers and grasp concepts effectively. For teachers, it provides insights into student performance, aids in creating lesson plans, remedial plans, presentations, and generates notes for enhanced teaching and resource management.

**Uniqueness/Innovation:** It fosters creativity and independent learning, enabling both students and teachers to access new resources, assess concept clarity, and engage in a more dynamic, collaborative learning experience.

**Where to find it:**  
Find it at the start and end of every Chapter